

# AXIS XFQ1656 Explosion-Protected Camera

Class/Division- and Zone-certified camera with deep learning

AXIS XFQ1656 is certified worldwide for use in hazardous locations (Class I/II/III Div 1, Zone 1,21, IIC, IIIC, and Ex I Mb certified). Ideal for health and safety applications, preinstalled smoke-alert analytics monitor for signs of smoke or fire in combustible environments. Plus, AXIS Object Analytics can detect people in restricted areas and supports safety compliance with hardhat detection. In addition, AXIS XFQ1656 can easily be integrated with production monitoring and industrial control systems to provide valuable image-based data, analyzed by deep learning algorithms. This can help improve scene understanding and offers valuable information about processes.

- > [Worldwide hazardous area certifications](#)
- > [Excellent light sensitivity](#)
- > [Advanced analytics preinstalled](#)
- > [Suitable for installation worldwide](#)
- > [Axis Edge Vault safeguards device](#)



# AXIS XFQ1656 Explosion-Protected Camera

<b>Camera</b>		Line input Internal microphone
<b>Image sensor</b>	1/1.8" progressive scan RGB CMOS	<b>Audio output</b> Output via network speaker pairing or portcast technology
<b>Lens</b>	Varifocal, 3.9–10 mm, F1.5 Horizontal field of view: 81°–47° Vertical field of view: 45°–27° Autofocus, IR corrected, remote zoom and focus, i-CS lens, P-Iris control Minimum focus distance: 0.5 m (1.6 ft)	<b>Audio encoding</b> 24bit LPCM, AAC-LC 8/16/32/44.1/48 kHz, G.711 PCM 8 kHz, G.726 ADPCM 8 kHz, Opus 8/16/48 kHz Configurable bit rate
<b>Day and night</b>	Automatic IR-cut filter Hybrid IR filter	<b>Network</b>
<b>Minimum illumination</b>	4 MP 25/30 fps with Forensic WDR and Lightfinder 2.0 Color: 0.05 lux at 50 IRE, F1.5 B/W: 0.01 lux at 50 IRE, F1.5 4 MP 50/60 fps with Lightfinder 2.0 Color: 0.1 lux at 50 IRE, F1.5 B/W: 0.02 lux at 50 IRE, F1.5 4 MP 25/30 fps with Forensic WDR and Lightfinder 2.0 With optional F0.9 lens Color: 0.02 lux at 50 IRE, F0.9 B/W: 0.004 lux at 50 IRE, F0.9	<b>Network protocols</b> IPv4, IPv6 USGv6, ICMPv4/ICMPv6, HTTP, HTTPS <sup>a</sup> , HTTP/2, TLS <sup>a</sup> , QoS Layer 3 DiffServ, FTP, SFTP, CIFS/SMB, SMTP, mDNS (Bonjour), UPnP <sup>®</sup> , SNMP v1/v2c/v3 (MIB-II), DNS/DNSv6, DDNS, NTP, NTS, RTSP, RTP, SRTP/RTSPS, TCP, UDP, IGMPv1/v2/v3, RTCP, ICMP, DHCPv4/v6, ARP, SSH, LLDP, CDP, MQTT v3.1.1, Secure syslog (RFC 3164/5424, UDP/TCP/TLS), Link-Local address (ZeroConf), IEEE 802.1X (EAP-TLS), IEEE 802.1AR
<b>Shutter speed</b>	1/47500 s to 1 s	<b>System integration</b>
<b>System on chip (SoC)</b>		<b>Application Programming Interface</b> Open API for software integration, including VAPIX <sup>®</sup> , metadata and AXIS Camera Application Platform (ACAP); specifications at <a href="https://axis.com/developer-community">axis.com/developer-community</a> . ACAP includes Native SDK and Computer Vision SDK. One-click cloud connection ONVIF <sup>®</sup> Profile G, ONVIF <sup>®</sup> Profile M, ONVIF <sup>®</sup> Profile S, and ONVIF <sup>®</sup> Profile T, specifications at <a href="https://onvif.org">onvif.org</a>
<b>Model</b>	ARTPEC-8	<b>Video management systems</b> Compatible with AXIS Companion, AXIS Camera Station, video management software from Axis' Application Development Partners available at <a href="https://axis.com/vms">axis.com/vms</a>
<b>Memory</b>	2048 MB RAM, 8192 MB Flash	<b>Onscreen controls</b> Autofocus Electronic image stabilization Day/night shift Defogging Wide dynamic range Video streaming indicator Privacy masks Media clip Timed wiper
<b>Compute capabilities</b>	Deep learning processing unit (DLPU)	<b>Event conditions</b> Application Audio: audio clip playing Device status: above/below/within operating temperature, IP address removed, live stream active, network lost, new IP address, ring power overcurrent protection, system ready Digital audio input status Edge storage: recording ongoing, storage disruption, storage health issues detected I/O: digital input, manual trigger, virtual input MQTT Scheduled and recurring: schedule Video: average bitrate degradation, day-night mode, tampering
<b>Video</b>		<b>Event actions</b> Audio clips: play, play while the rule is active, stop Day-night mode Defog: set defog mode, set defog mode while the rule is active I/O: toggle I/O once, toggle I/O while the rule is active MQTT: publish Notification: HTTP, HTTPS, TCP and email Overlay text Pre- and post-alarm video or image buffering for recording or upload Recordings: record, record while the rule is active SNMP traps: send, send while the rule is active Status LED Upload of images or video clips: FTP, SFTP, HTTP, HTTPS, network share and email WDR mode Wiper
<b>Video compression</b>	H.264 (MPEG-4 Part 10/AVC) Baseline, Main and High Profiles H.265 (MPEG-H Part 2/HEVC) Main Profile Motion JPEG	<b>Built-in installation aids</b> Remote zoom and focus, remote back focus, leveling assistant, pixel counter
<b>Resolution</b>	16:9 2688x1512 Quad HD to 160x90 4:3 2016x1512 to 160x120	<b>Analytics</b>
<b>Frame rate</b>	No WDR: Up to 50/60 fps (50/60 Hz) in all resolutions WDR: Up to 25/30 fps (50/60 Hz) in all resolutions	<b>Applications</b> Included AXIS Object Analytics, AXIS Scene Metadata, AXIS Video Motion Detection, smoke alert Supported AXIS Perimeter Defender, AXIS License Plate Verifier Support for AXIS Camera Application Platform enabling installation of third-party applications, see <a href="https://axis.com/acap">axis.com/acap</a>
<b>Video streaming</b>	Multiple, individually configurable streams in H.264, H.265 and Motion JPEG Axis Zipstream technology in H.264 and H.265 Controllable frame rate and bandwidth VBR/ABR/MBR H.264/H.265 Low latency mode Video streaming indicator	
<b>Signal-to-noise ratio</b>	>55 dB	
<b>WDR</b>	Forensic WDR: Up to 120 dB depending on scene	
<b>Multi-view streaming</b>	Up to 8 individually cropped out view areas	
<b>Noise reduction</b>	Spatial filter (2D noise reduction) Temporal filter (3D noise reduction)	
<b>Image settings</b>	Saturation, contrast, brightness, sharpness, white balance, day/night threshold, local contrast, tone mapping, exposure mode, exposure zones, defogging, barrel distortion correction, electronic image stabilization, compression, rotation: 0°, 90°, 180°, 270° including Corridor Format, mirroring, dynamic text and image overlay, polygon and mosaic privacy mask Scene profiles: Forensic, Vivid, Traffic overview	
<b>Image processing</b>	Forensic WDR, Lightfinder 2.0	
<b>Pan/Tilt/Zoom</b>	Digital PTZ, optical zoom, preset positions Preset position tour	
<b>Audio</b>		
<b>Audio features</b>	AGC automatic gain control Network speaker pairing	
<b>Audio streaming</b>	Configurable duplex: One-way (simplex, half duplex) Two-way (half duplex, full duplex)	
<b>Audio input</b>	10-band graphic equalizer Input for external microphone, optional 5 V microphone power Digital input, optional 12 V ring power	

<b>AXIS Object Analytics</b>	<p>Object classes: humans, vehicles (types: cars, buses, trucks, bikes, other)</p> <p>Trigger conditions: line crossing, object in area, time in area, PPE monitoring</p> <p>Up to 10 scenarios</p> <p>Other features: triggered objects visualized with trajectories, color-coded bounding boxes and tables</p> <p>Polygon include/exclude areas</p> <p>Perspective configuration</p> <p>ONVIF Motion Alarm event</p>
------------------------------	------------------------------------------------------------------------------------------------------------------------------------------------------------------------------------------------------------------------------------------------------------------------------------------------------------------------------------------------------------------------------------------------------------------------

<b>AXIS Scene Metadata</b>	<p>Object classes: humans, faces, vehicles (types: cars, buses, trucks, bikes), license plates</p> <p>Object attributes: vehicle color, upper/lower clothing color, confidence, position</p>
----------------------------	----------------------------------------------------------------------------------------------------------------------------------------------------------------------------------------------

### Approvals

<b>Supply chain</b>	TAA compliant
---------------------	---------------

<b>EMC</b>	<p>EN 55035, EN 55032 Class A, EN 61000-3-2, EN 61000-3-3, EN 61000-6-1, EN 61000-6-2</p> <p>Australia/New Zealand: RCM AS/NZS CISPR 32 Class A</p> <p>Canada: ICES-3(A)/NMB-3(A)</p> <p>USA: FCC Part 15 Subpart B Class A</p>
------------	---------------------------------------------------------------------------------------------------------------------------------------------------------------------------------------------------------------------------------

<b>Safety</b>	CAN/CSA C22.2 No. 62368-1 ed. 3, IEC/EN/UL 62368-1 ed. 3IS 13252
---------------	------------------------------------------------------------------

<b>Environment</b>	IEC 60068-2-1, IEC 60068-2-2, IEC 60068-2-6, IEC 60068-2-14, IEC 60068-2-27, IEC 60068-2-64, IEC 60068-2-78, UL 50E
--------------------	---------------------------------------------------------------------------------------------------------------------

<b>Network</b>	IPv6 USGv6, NIST SP500-267
----------------	----------------------------

<b>Cybersecurity</b>	ETSI EN 303 645, FIPS 140
----------------------	---------------------------

<b>Explosion</b>	IEC/EN 60079-0, IEC/EN 60079-1, IEC/EN 60079-31, UL 1203, UL 60079-1, UL 60079-31, CSA C22.2 No. 30, CSA C22.2 No. 25, CSA C22.2 No. 60079-0, CSA C22.2 No. 60079-1, CSA C22.2 No. 60079-31, UL121201
------------------	-------------------------------------------------------------------------------------------------------------------------------------------------------------------------------------------------------

<b>Certifications</b>	<p>Type F31111</p> <p>ATEX:</p> <p>I M2 Ex db I Mb</p> <p>II 2 G Ex db IIC T5 Gb</p> <p>II 2 D Ex tb IIIC T100°C Db</p> <p>Certificate: ExVeritas 20ATEX0651X</p> <p>IECEX:</p> <p>Ex db I Mb</p> <p>Ex db IIC T5 Gb</p> <p>Ex tb IIIC T100°C Db</p> <p>Certificate: EXV 20.0017X</p> <p>cMETus:</p> <p>Class I Div 1 Groups B,C,D T5</p> <p>Class II Div 1 Groups E,F,G T5</p> <p>Class I Zone 1 AEx db IIC Gb</p> <p>Zone 21 AEx tb IIIC</p> <p>Certificate: MET E115198</p>
-----------------------	--------------------------------------------------------------------------------------------------------------------------------------------------------------------------------------------------------------------------------------------------------------------------------------------------------------------------------------------------------------------------------------------------------------------------------------------------------------------------------

### Cybersecurity

<b>Edge security</b>	<p>Software: Signed OS, brute force delay protection, digest authentication and OAuth 2.0 RFC6749 OpenID Authorization Code Flow for centralized ADFS account management, password protection</p> <p>Hardware: Axis Edge Vault cybersecurity platform</p> <p>TPM 2.0 (CC EAL4+, FIPS 140-2 Level 2), secure element (CC EAL 6+), system-on-chip security (TEE), Axis device ID, secure keystore, signed video, secure boot, encrypted filesystem (AES-XTS-Plain64 256bit)</p>
----------------------	-------------------------------------------------------------------------------------------------------------------------------------------------------------------------------------------------------------------------------------------------------------------------------------------------------------------------------------------------------------------------------------------------------------------------------------------------------------------------------

<b>Network security</b>	<p>IEEE 802.1X (EAP-TLS, PEAP-MSCHAPv2)<sup>3</sup>, IEEE 802.1AE (MACsec PSK/EAP-TLS), IEEE 802.1AR, HTTPS/HSTS<sup>3</sup>, TLS v1.2/v1.3<sup>3</sup>, Network Time Security (NTS), X.509 Certificate PKI, host-based firewall</p>
-------------------------	--------------------------------------------------------------------------------------------------------------------------------------------------------------------------------------------------------------------------------------

<b>Documentation</b>	<p>AXIS OS Hardening Guide</p> <p>Axis Vulnerability Management Policy</p> <p>Axis Security Development Model</p> <p>AXIS OS Software Bill of Material (SBOM)</p> <p>To download documents, go to <a href="https://axis.com/support/cybersecurity/resources">axis.com/support/cybersecurity/resources</a></p>
----------------------	---------------------------------------------------------------------------------------------------------------------------------------------------------------------------------------------------------------------------------------------------------------------------------------------------------------

To read more about Axis cybersecurity support, go to [axis.com/cybersecurity](https://axis.com/cybersecurity)

### General

<b>Casing</b>	IP66-, IP67- and IP68-rated, electropolished SUS316L (EN 1.4404) stainless steel casing for maximum corrosion protection Wiper included
---------------	--------------------------------------------------------------------------------------------------------------------------------------------

<b>Power</b>	Power over Ethernet (PoE) IEEE 802.3bt Type 3 Class 6 Typical 11.5 W, max 51W 100-240 V AC, typical 13.3 V A, max 56 V A
--------------	--------------------------------------------------------------------------------------------------------------------------------

<b>Connectors</b>	<p>Network: RJ45 10BASE-T/100BASE-TX/1000BASE-T PoE</p> <p>Network: SFP connector</p> <p>I/O: Terminal block for two supervised and two unsupervised configurable inputs / digital outputs (12 V DC output, max load 50 mA)</p> <p>Serial communication: RS485, 2 pos, terminal block</p> <p>Power: AC input, terminal block</p> <p>Audio: 3.5 mm mic/line in, 3.5 mm line out</p> <p>Auxiliary output: 48 V DC 14.4 W, 0.3 A</p> <p>Two M25x1.5 cable entries</p> <p>Two M20x1.5 cable entries</p>
-------------------	-----------------------------------------------------------------------------------------------------------------------------------------------------------------------------------------------------------------------------------------------------------------------------------------------------------------------------------------------------------------------------------------------------------------------------------------------------------------------------------------------------

<b>Storage</b>	<p>256 GB microSD/microSDHC/microSDXC card included</p> <p>Support for SD card encryption (AES-XTS-Plain64 256bit)</p> <p>Recording to network-attached storage (NAS)</p> <p>For SD card and NAS recommendations see <a href="https://axis.com">axis.com</a></p>
----------------	------------------------------------------------------------------------------------------------------------------------------------------------------------------------------------------------------------------------------------------------------------------

<b>Operating conditions</b>	<p>With PoE: -40 °C to 60 °C (-40 °F to 140 °F)</p> <p>With AC/SFP: -40 °C to 55 °C (-40 °F to 131 °F)</p> <p>Humidity 10-100% RH (condensing)</p>
-----------------------------	----------------------------------------------------------------------------------------------------------------------------------------------------

<b>Storage conditions</b>	-40 °C to 60 °C (-40 °F to 140 °F) Humidity 5-95% RH (non-condensing)
---------------------------	--------------------------------------------------------------------------

<b>Dimensions</b>	342 x 160 x 170 mm (13.46 x 6.3 x 6.7 in)
-------------------	-------------------------------------------

<b>Weight</b>	9 kg (19.8 lb)
---------------	----------------

<b>Box content</b>	Camera, installation guide, installation manual IM001, AXIS TQ1903-E Swivel Joint, AXIS TQ1924-E Washer Nozzle, AXIS TQ1917 Adapter M25x1.5-3/4 NPT, connector kit, H4 bit, owner authentication key, Declaration of Conformity
--------------------	---------------------------------------------------------------------------------------------------------------------------------------------------------------------------------------------------------------------------------

<b>Optional accessories</b>	<p>AXIS TQ1001-E Wall Mount,</p> <p>AXIS TQ1301-E Pole Mount 50-150 mm<sup>b</sup>,</p> <p>TQ1303-E Corner Mount<sup>c</sup></p> <p>For more accessories, see <a href="https://axis.com">axis.com</a></p>
-----------------------------	-----------------------------------------------------------------------------------------------------------------------------------------------------------------------------------------------------------

<b>System tools</b>	AXIS Site Designer, AXIS Device Manager, product selector, accessory selector, lens calculator Available at <a href="https://axis.com">axis.com</a>
---------------------	--------------------------------------------------------------------------------------------------------------------------------------------------------

<b>Languages</b>	English, German, French, Spanish, Italian, Russian, Simplified Chinese, Japanese, Korean, Portuguese, Polish, Traditional Chinese, Dutch, Czech, Swedish, Finnish, Turkish, Thai, Vietnamese
------------------	----------------------------------------------------------------------------------------------------------------------------------------------------------------------------------------------

<b>Warranty</b>	5-year warranty, see <a href="https://axis.com/warranty">axis.com/warranty</a>
-----------------	--------------------------------------------------------------------------------

<b>Part numbers</b>	Available at <a href="https://axis.com/products/axis-xfq1656#part-numbers">axis.com/products/axis-xfq1656#part-numbers</a>
---------------------	----------------------------------------------------------------------------------------------------------------------------

### Sustainability

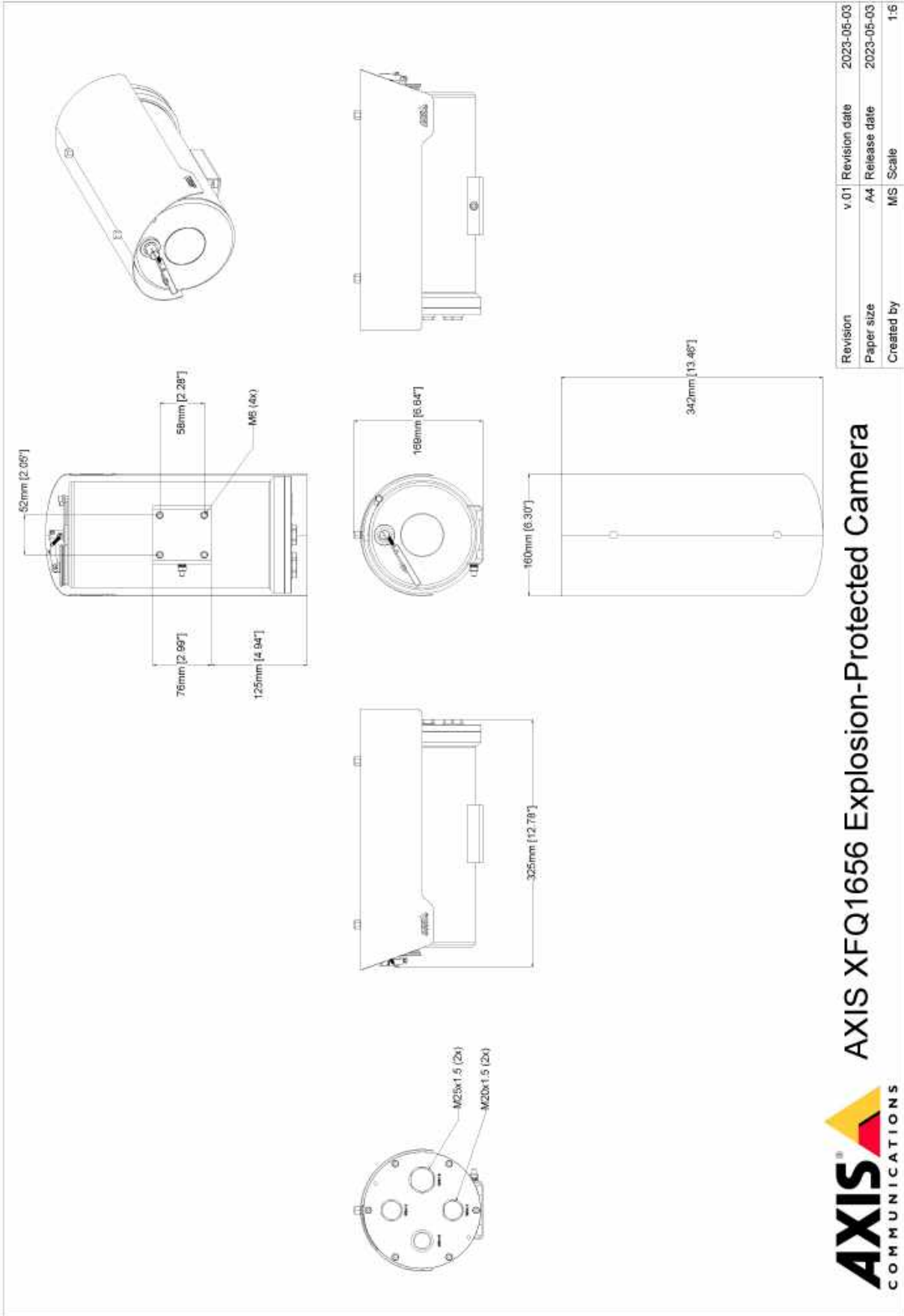
<b>Substance control</b>	RoHS in accordance with EU RoHS Directive 2011/65/EU/ and EN 63000:2018 REACH in accordance with (EC) No 1907/2006. For SCIP UUID, see <a href="https://echa.europa.eu">echa.europa.eu</a>
--------------------------	-----------------------------------------------------------------------------------------------------------------------------------------------------------------------------------------------

<b>Materials</b>	<p>Screened for conflict minerals in accordance with OECD guidelines</p> <p>To read more about sustainability at Axis, go to <a href="https://axis.com/about-axis/sustainability">axis.com/about-axis/sustainability</a></p>
------------------	------------------------------------------------------------------------------------------------------------------------------------------------------------------------------------------------------------------------------

<b>Environmental responsibility</b>	<p><a href="https://axis.com/environmental-responsibility">axis.com/environmental-responsibility</a></p> <p>Axis Communications is a signatory of the UN Global Compact, read more at <a href="https://unglobalcompact.org">unglobalcompact.org</a></p>
-------------------------------------	---------------------------------------------------------------------------------------------------------------------------------------------------------------------------------------------------------------------------------------------------------

- This product includes software developed by the OpenSSL Project for use in the OpenSSL Toolkit. ([openssl.org](https://openssl.org)), and cryptographic software written by Eric Young ([ey@cryptsoft.com](mailto:ey@cryptsoft.com)).
- AXIS TQ1301-E Pole Mount must be installed on AXIS TQ1001-E Wall Mount
- AXIS TQ1303-E Corner Mount must be installed on AXIS TQ1001-E Wall Mount

# Dimension drawing



Revision	v 01	Revision date	2023-05-03
Paper size	A4	Release date	2023-05-03
Created by	MS	Scale	1:6

**AXIS XFQ1656 Explosion-Protected Camera**



www.axis.com

© 2023 Axis Communications

## Highlighted capabilities

### AXIS Object Analytics

AXIS Object Analytics is a preinstalled, multifeatured video analytics that detects and classifies humans, vehicles, and types of vehicles. Thanks to AI-based algorithms and behavioral conditions, it analyzes the scene and their spatial behavior within – all tailored to your specific needs. Scalable and edge-based, it requires minimum effort to set up and supports various scenarios running simultaneously.

### Axis Edge Vault

Axis Edge Vault is the hardware-based cybersecurity platform that safeguards the Axis device. It forms the foundation that all secure operations depend on and offer features to protect the device's identity, safeguard its integrity and protect sensitive information from unauthorized access. For instance, **secure boot** ensures that a device can boot only with **signed OS**, which prevents physical supply chain tampering. With signed OS, the device is also able to validate new device software before accepting to install it. And the **secure keystore** is the critical building-block for protecting cryptographic information used for secure communication (IEEE 802.1X, HTTPS, Axis device ID, access control keys etc.) against malicious extraction in the event of a security breach. The secure keystore and secure connections are provided through a Common Criteria or FIPS 140 certified hardware-based cryptographic computing module.

Furthermore, signed video ensures that video evidence can be verified as untampered. Each camera uses its unique video signing key, which is securely stored in the secure keystore, to add a signature into the video stream allowing video to be traced back to the Axis camera from where it originated.

To read more about Axis Edge Vault, go to [axis.com/solutions/edge-vault](https://www.axis.com/solutions/edge-vault).

### Electronic image stabilization

Electronic image stabilization (EIS) provides smooth video in situations where a camera is subject to vibrations. Built-in gyroscopic sensors continuously detect the camera's movements and vibrations, and they automatically adjust the frame to ensure you always capture the details you need. Electronic image stabilization relies on different algorithms for modeling camera motion, which are used to correct the images.

### Forensic WDR

Axis cameras with wide dynamic range (WDR) technology make the difference between seeing important forensic details clearly and seeing nothing but a blur in challenging light conditions. The difference between the darkest and the brightest spots can spell trouble for image usability and clarity. Forensic WDR effectively reduces visible noise and artifacts to deliver video tuned for maximal forensic usability.

### Lightfinder

The Axis Lightfinder technology delivers high-resolution, full-color video with a minimum of motion blur even in near darkness. Because it strips away noise, Lightfinder makes dark areas in a scene visible and captures details in very low light. Cameras with Lightfinder discern color in low light better than the human eye. In surveillance, color may be the critical factor to identify a person, an object, or a vehicle.

For more information, see [axis.com/glossary](https://www.axis.com/glossary)